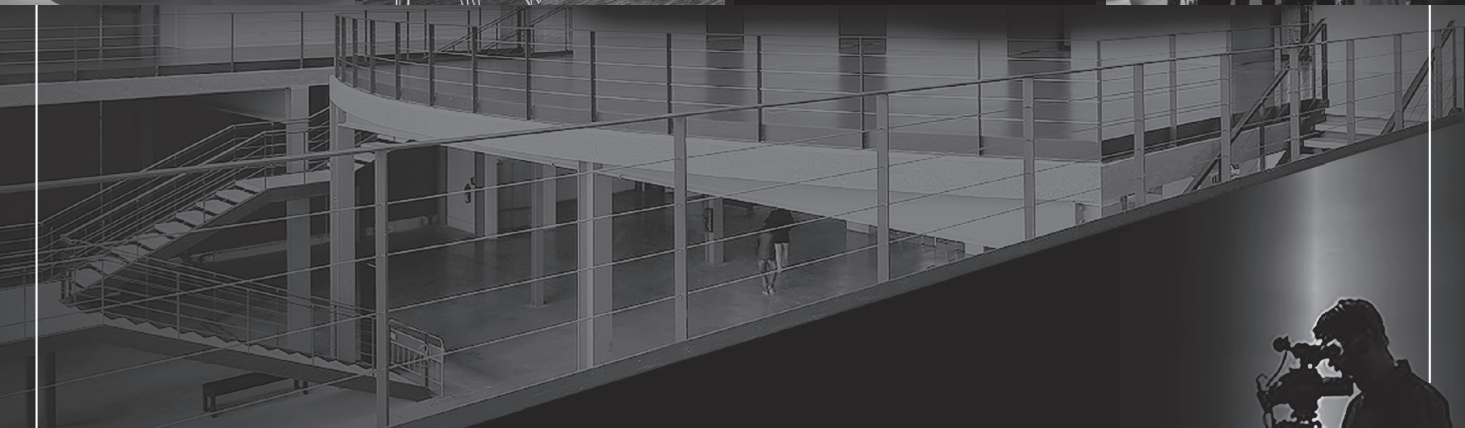


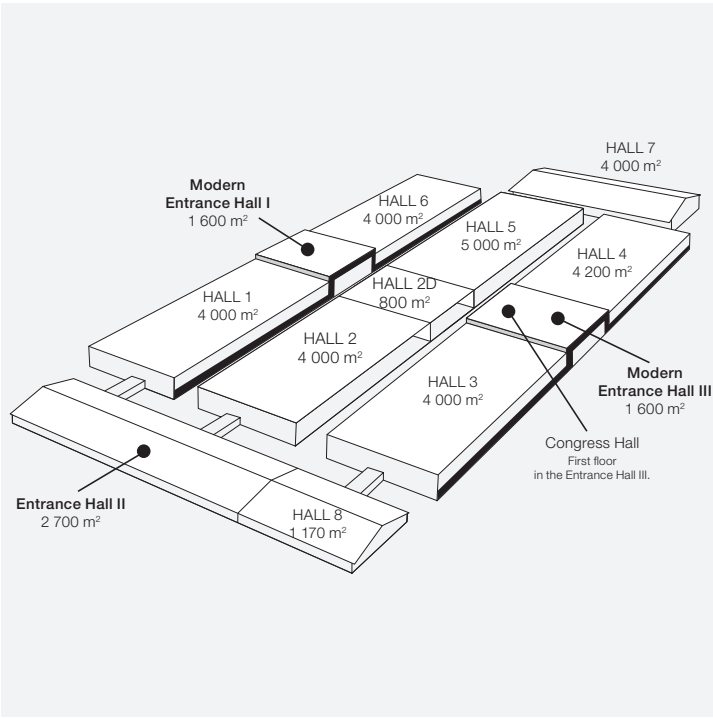
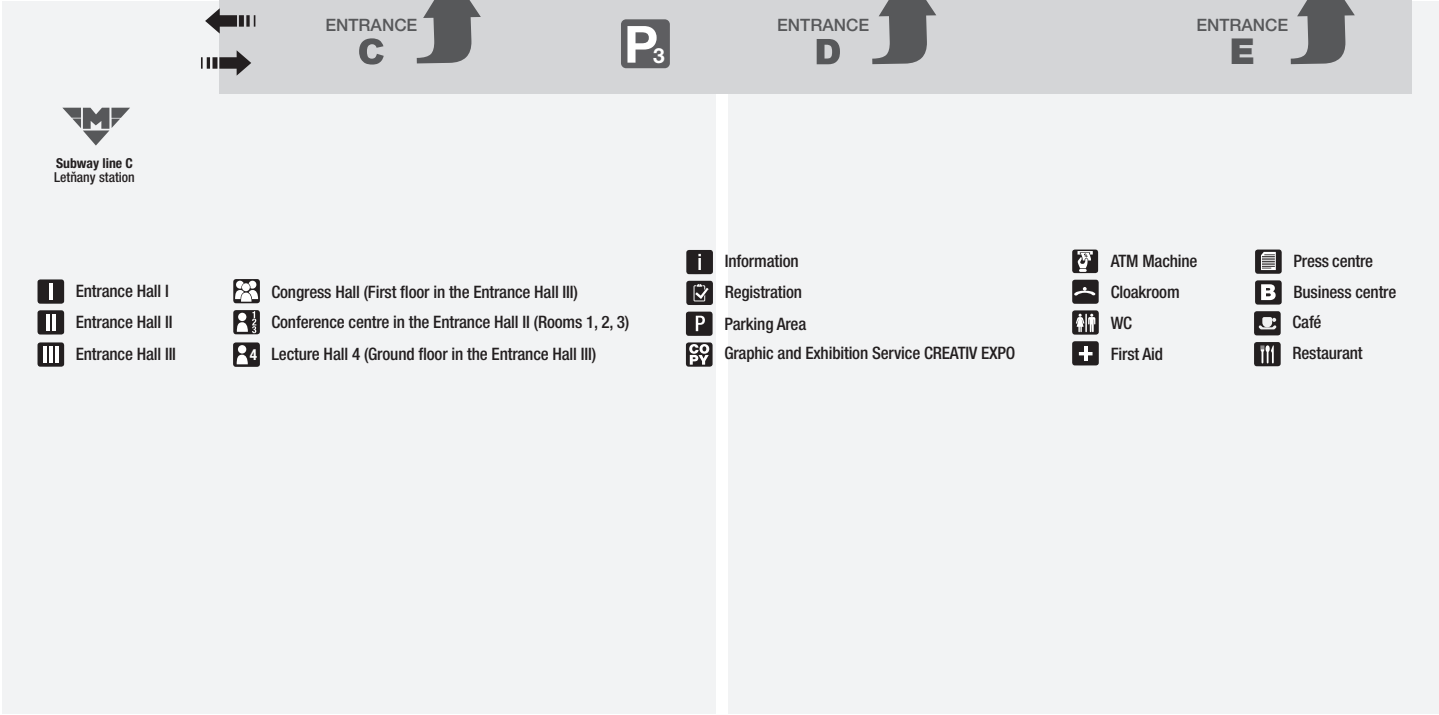
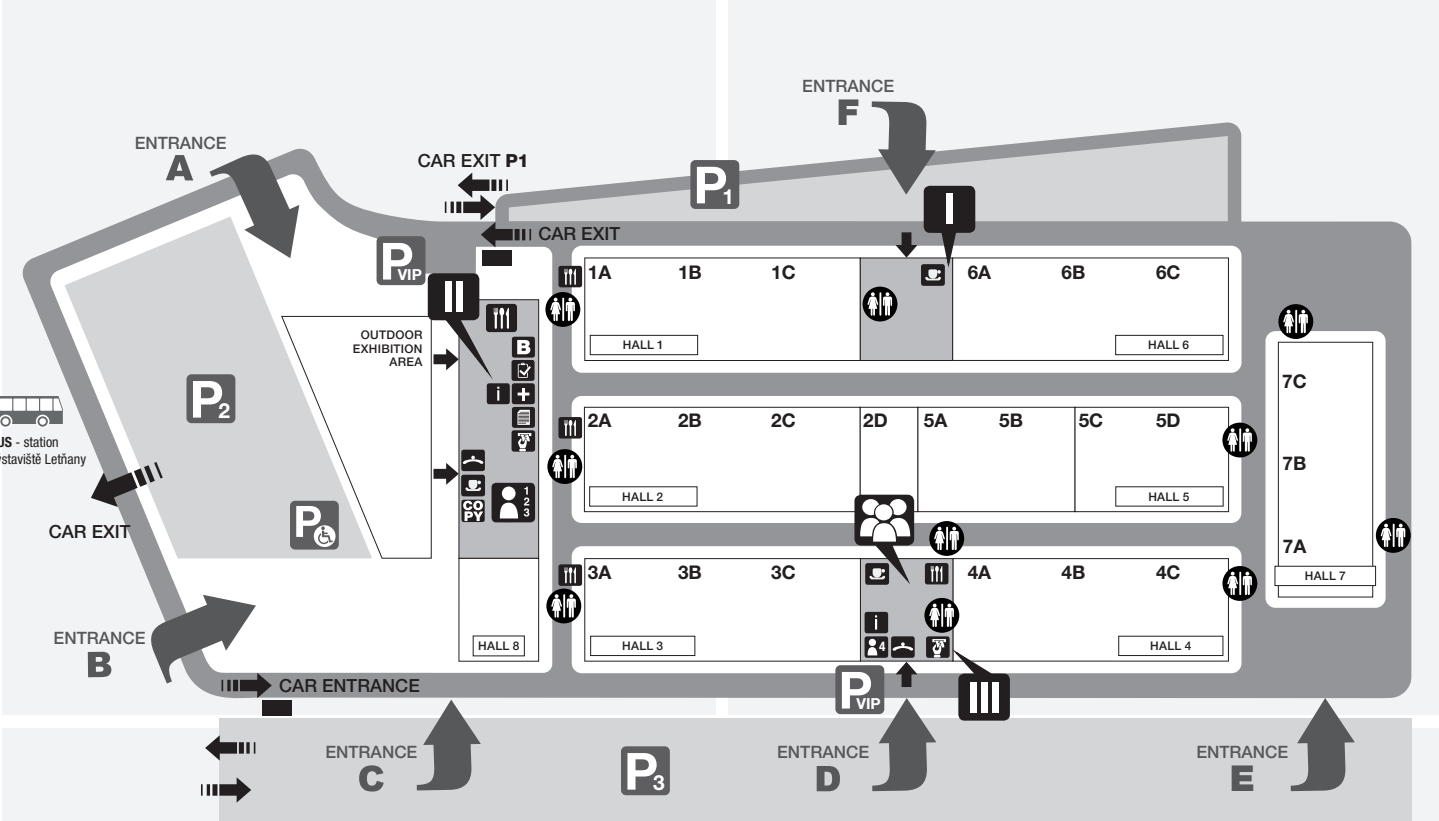


Place
where you will get noticed



TECHNICAL
specification

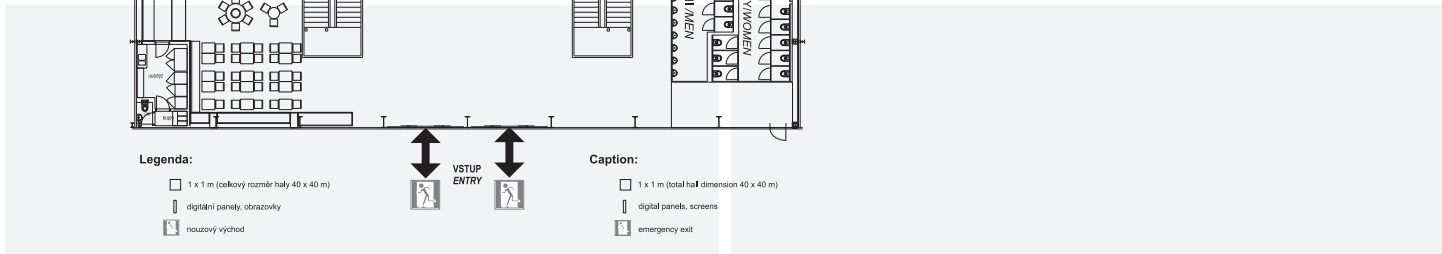




HALL CAPACITY				
		THEATRE	SCHOOL	BANQUET
Hall 1	4000 m ²	3000	1800	1300
Hall 2	4000 m ²	3000	1800	1300
Hall 2D	800 m ²	600	360	270
Hall 3	4000 m ²	3000	1800	1300
Hall 4	4200 m ²	3100	1900	1400
Hall 5AB	2600 m ²	1900	1200	850
Hall 5CD	2400 m ²	1800	1100	800
Hall 6	4000 m ²	3000	1800	1300
Hall 7	4000 m ²	3000	1800	1300
Hall 8	1170 m ²	850	530	390
Congress Hall	600 m ²	650	280	380
Foyer	480 m ²			
Conference Room 1	208 m ²	150	70	100
Conference Room 2, 3	48 m ²	30	x	x
Multifunctional Room EHIII	100 m ²	60	x	x

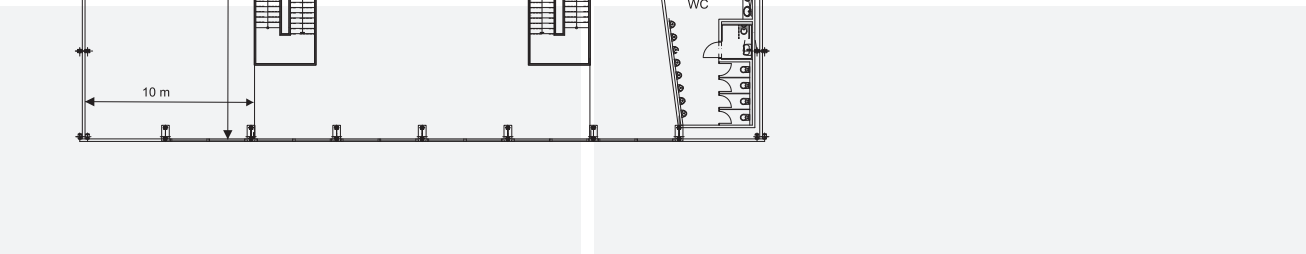
DIMENSIONS OF HALLS in PVA EXPO PRAGUE				
Building	Gross area	Inner hall dimensions	Inner side height of the hall	Inner central height of the hall
Entrance Hall I	1600 m ²	40 x 40 m	11 m	5 m (build-in floor level)
Entrance Hall II	2700 m ²	30 x 90 m	3,5 m	7,5 m
Entrance Hall III	1600 m ²	40 x 40 m	11 m	5 m (build-in floor level)
Hall 1	4000 m ²	40 x 100 m	9 m	9 m
Hall 2	4000 m ²	40 x 100 m	9 m	9 m
Hall 2D	800 m ²	40 x 20 m	9 m	9 m
Hall 3	4000 m ²	40 x 100 m	9 m	9 m
Hall 4	4200 m ²	40 x 105 m	9 m	9 m
Hall 5	5000 m ²	40 x 125 m	9 m	9 m
Hall 6	4000 m ²	40 x 100 m	9 m	9 m
Hall 7	4000 m ²	40 x 100 m	4,5 m	4,5 m
Hall 8	1170 m ²	30 x 39 m	3,5 m	7,5 m

ENTRANCE HALL I

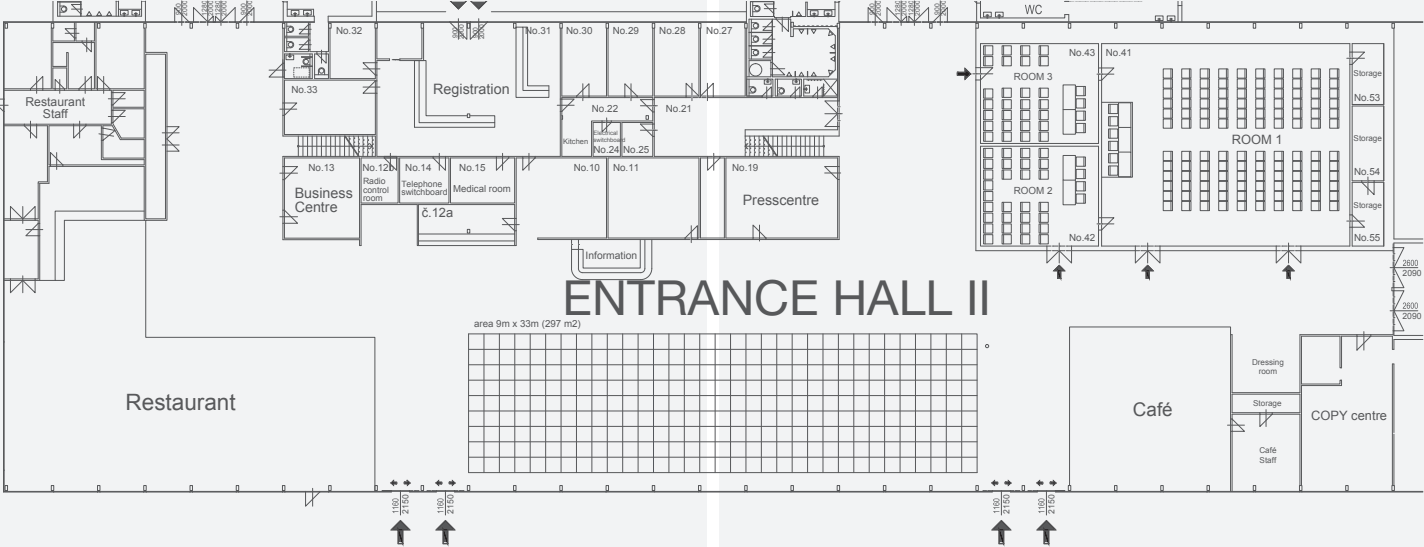


ENTRANCE HALL I		
Gross Area	1 600 m ²	
Clearance Height	5 m	
Technical Entry	From Hall 1	
Entry for Personnel and Visitors	Double leaf doors	
Floor	Industrial concrete slab	
Allowable Bearing Capacity of the Floor	800–1 500 kg/m ² (capacity can be technologically increased, according to requirements of the exhibits)	
Installation upon request	connections of water, electric current, internet	
Lighting	natural light (glass walls), artificial lights - LED	
Heating	air-conditioning	
Other Equipment	toilets	
	fixed instalation of cafe	

ENTRANCE HALL I

1ST FLOOR

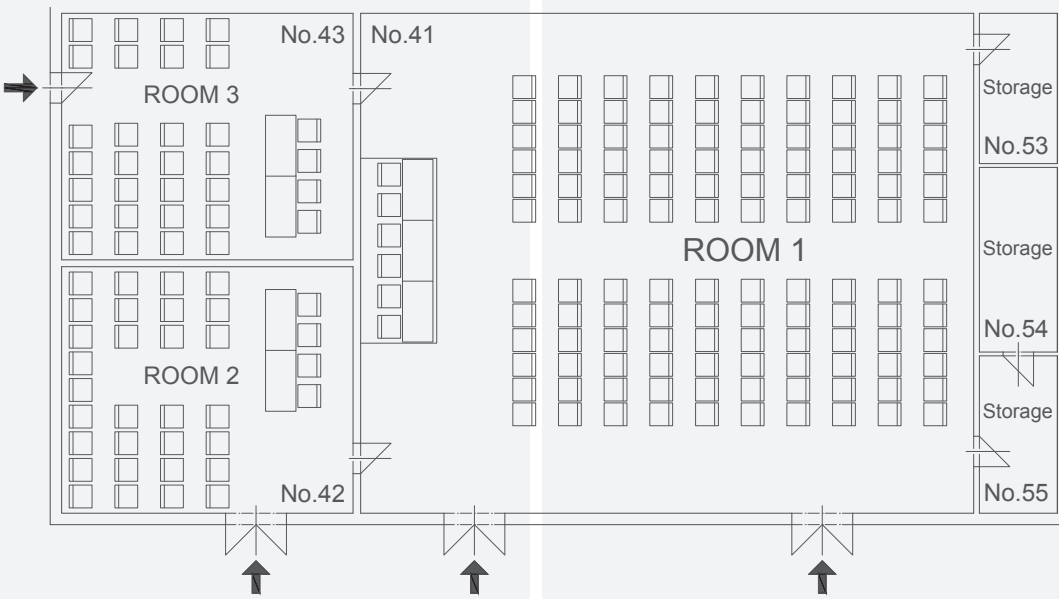
ENTRANCE HALL II



ENTRANCE HALL II

Gross Area	2 700 m²
Gross Exhibition area	300 m²
Clearance Height of the Building	lateral 3.5 m, middle 7.5 m
Technical Driveway	from the Hall 8
Personnel and Visitor Entrances	sliding and double leaf doors
Floor	interlocking tiles, ceramic tiles
Allowable Bearing Capacity of the Floor	800–1 500 kg/m² (capacity can be technologically increased, according to requirements of the exhibits)
Installation after Consultation	connections of water, electric current, compressed air, telephone, internet
Lighting	natural light (glass walls), artificial lights - LED
Heating	hot water
Ventilation of Halls	yes
Other Equipment	fixed installation of restaurant and snack bar conference center, press center, business center toilets, cloakroom registration with background - offices, Information counter floor built-in offices ATM digital advertising panels copy center radio switchboard the insurance company emergency room

CONFERENCE CENTRE IN PVA EXPO PRAGUE

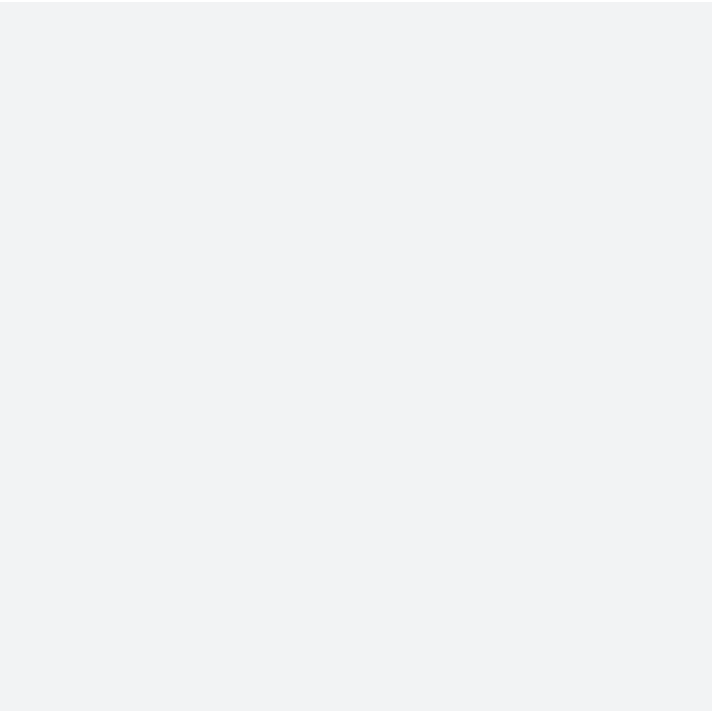
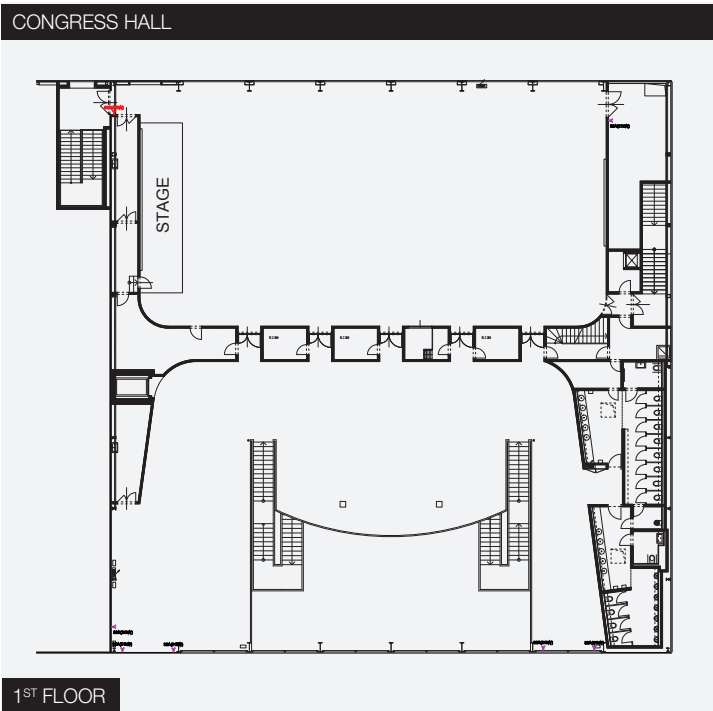
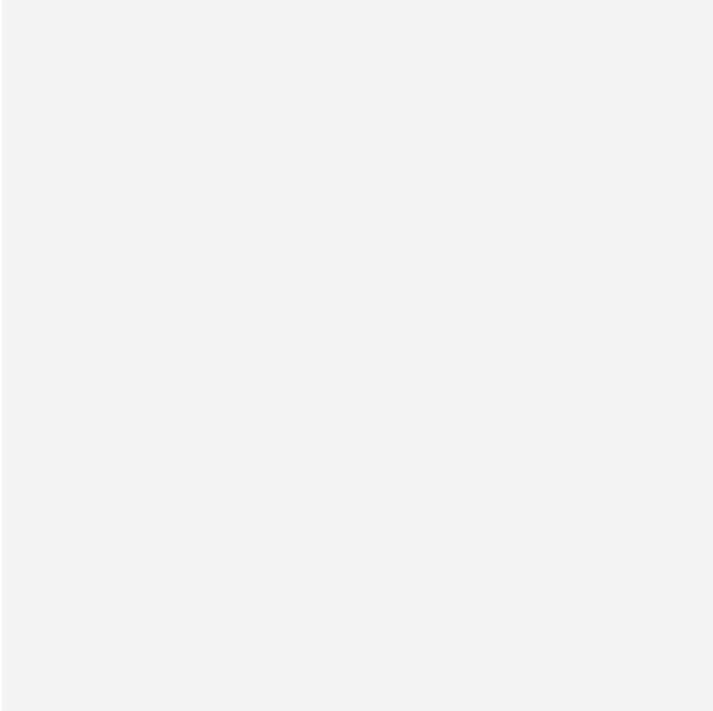
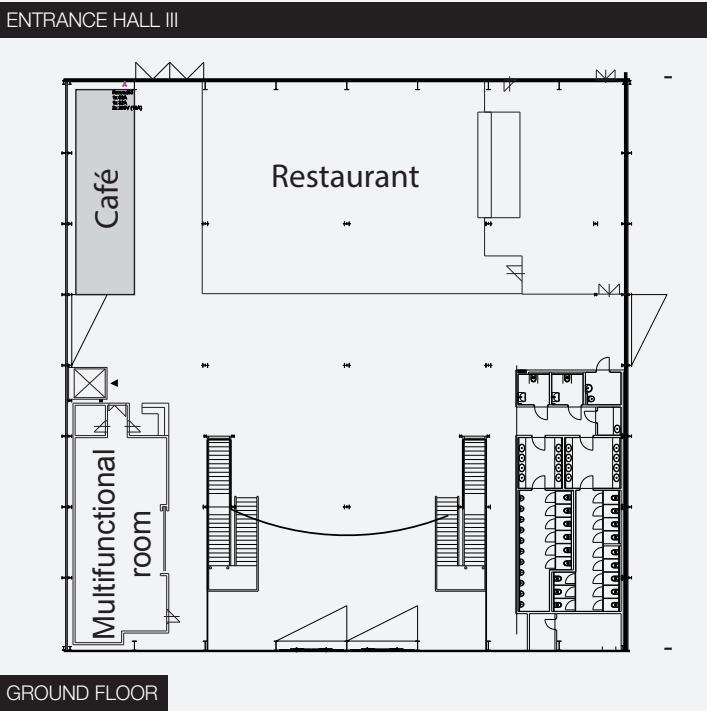


ROOM 1

Total Area	208 m² (16 x 13 m)
The Area Surface	carpet
Installation	connections of electricity
Equipment	podium, lecture stand, chairs
AV equipment	Projector Panasonic PT-VZ585, luminosity 5000 ANSI Framed canvas 3200 x 2000 mm (16:10) Audio mix SOUNDCRAFT Ui 16 2x hand wireless microphone SENNHEISER 2x wireless headset microphone SENNHEISER 2x speaker box 12" Apart MASK 12-BL Projection notebook DELL Vostro 15-P62F

ROOMS 2, 3

Total Area	48 m² (7,5 x 6,4 m)
The Area Surface	PVC
Installation	connections of electricity (230 V), internet
Equipment	tables, chairs

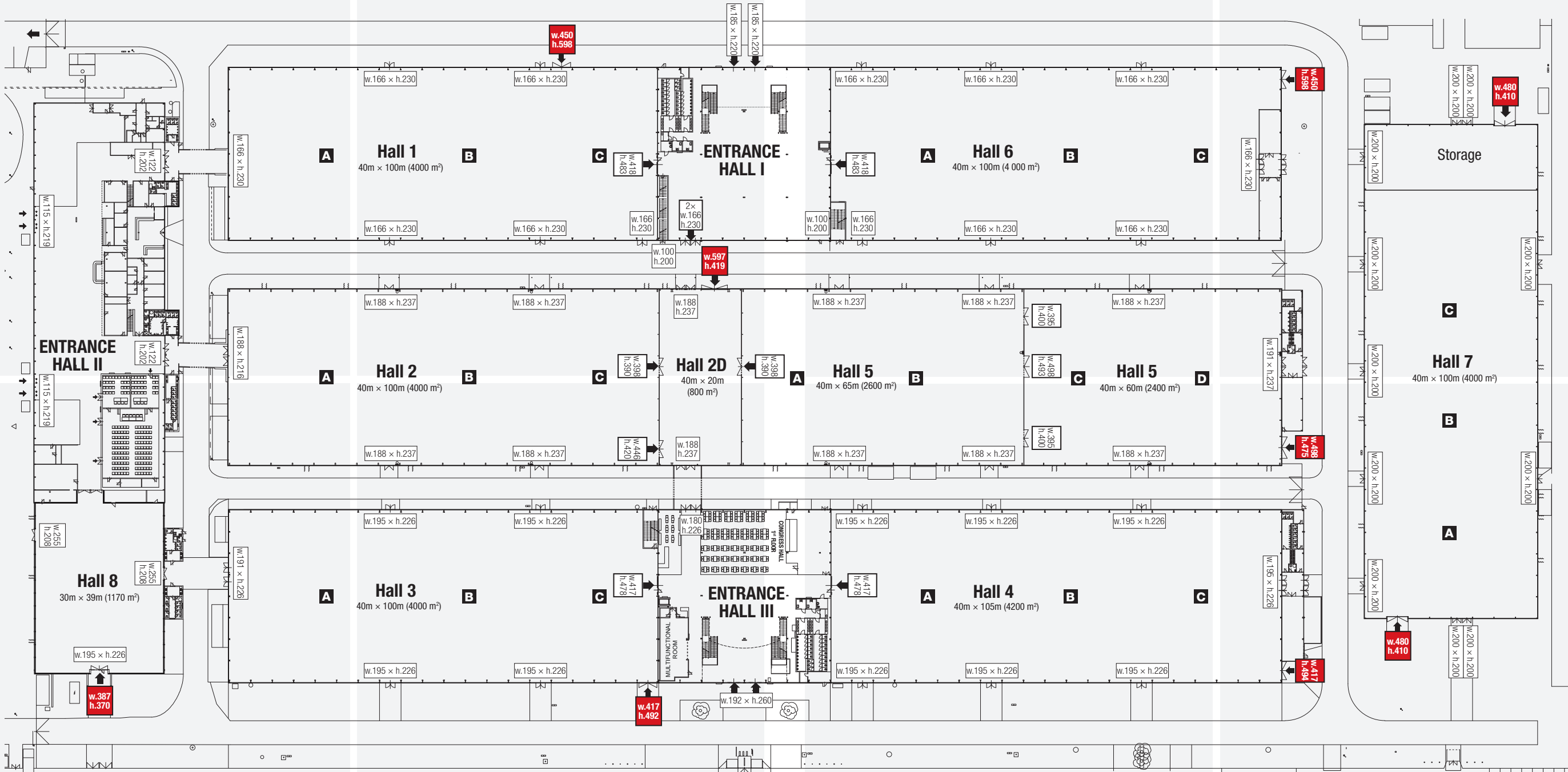


ENTRANCE HALL III	
Gross Exhibition area	1 600 m²
Clearance Height	5 m
Technical Entry	From Hall 3
Floor	industrial concrete slab
Allowable Bearing Capacity of the Floor	800–1 500 kg/m² (capacity can be technologically increased, according to requirements of the exhibits)
Installation	connections of water, electric current, internet
Lighting	natural light (glass walls), artificial light - LED
Heating	hot air, air-conditioning (Congress Hall)
Ventilation	Yes – Multifunctional room
Additional equipment	Fixed restaurant and coffee place
	Toilets, Cloakroom
	Information counter
	ATM
	digital advertising panels

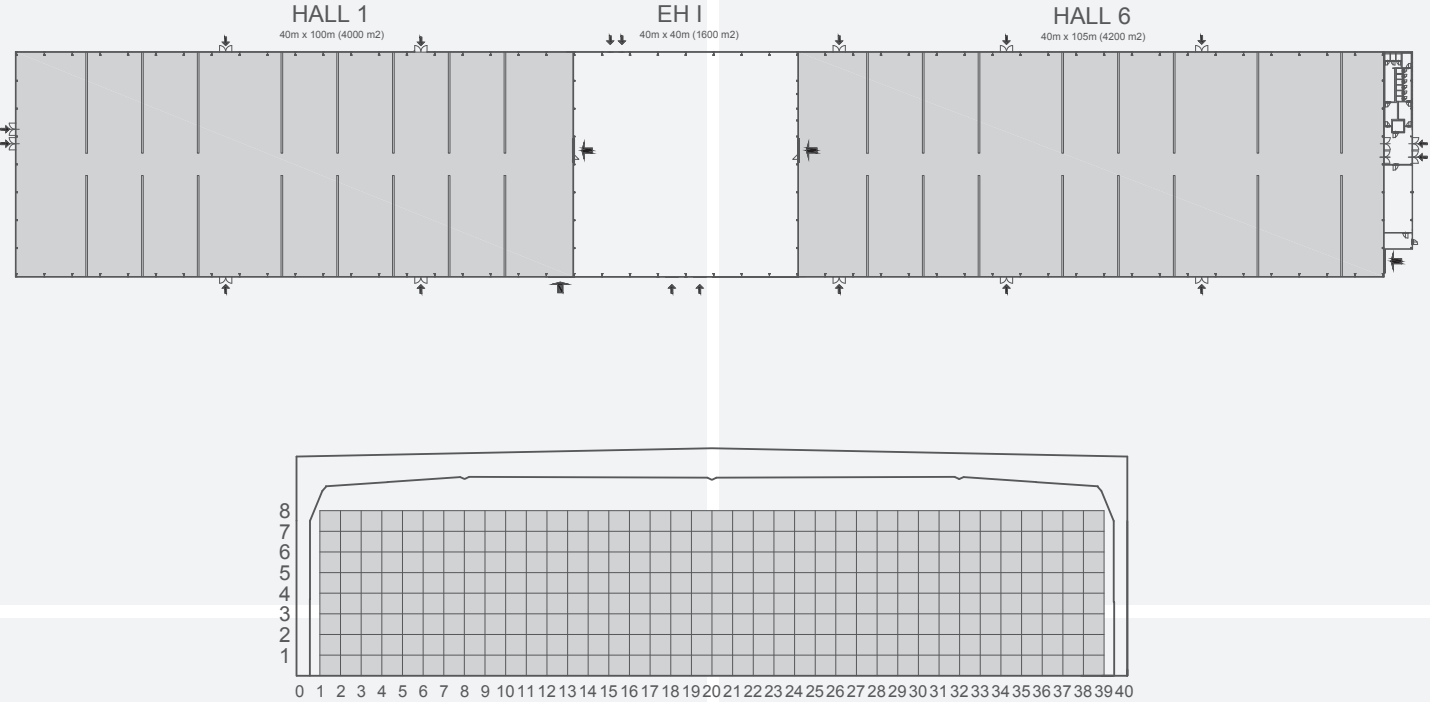
- CONGRESS HALL
- Congress hall 600 m², foyer 480 m²
 - Congress hall with a capacity of up to 650 people, theatre, school, banquet arrangement possibilities
 - strategically located on the floor in Entrance Hall III between Halls 3 and 4, possibility of further connection with exhibition halls
 - a generous foyer suitable for banquet celebrations, accompanying program and partner presentation stands
 - modern audio visual technology with a control system AMX, widescreen HD projection
 - the possibility of using the most modern mapping
 - daylight with the possibility of shading
 - air conditioning
 - barrier-free access
 - large walk-through background behind the stage, dressing room, storage boxes, lift (door width 90 cm)

- AV TECHNOLOGY IN CONGRESS HALL *)
- PROJECTION TECHNOLOGY
- 16:9 projection (can be extended to 32:9)
 - data projector 20,000 ANSILM, WUXGA, including lens
 - data switch, remote control of the presentation
 - presentation notebook
 - screen 9 x 3.6 m, infrastructure cabling required
- STAGE LIGHTING
- fresnel reflector 1000 W – 6 pcs
 - profile reflector 750 W – 4 pcs
 - dimmer, control console
- SOUND SYSTEM
- Line Array active speakers – podium – 6 pcs
 - Line Array active speakers – Delay rear part – 4 pcs
 - active Subwoofer „18“ - 4 pcs
 - digital stage box, digital mixing desk
 - wireless microphone set (2 pcs hands, 2 pcs headset)
 - connecting a PC to the audio system
 - necessary infrastructure cabling

*) basic equipment



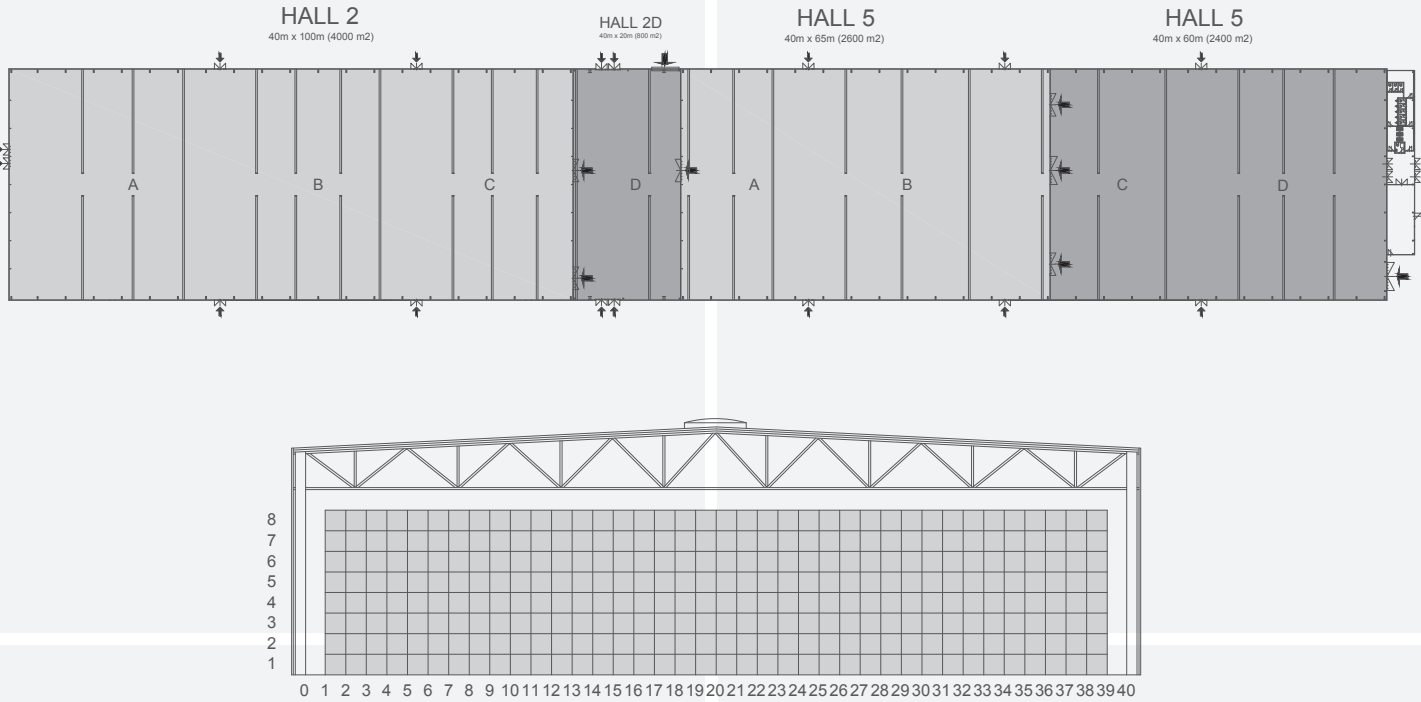
HALL 1 | HALL 6



HALL 1 | HALL 6

Gross Exhibition area	4 000 m²
Clearance Height of the Building	lateral 9 m, middle 9 m
Profiles of Entries	double leaf doors and rolling gate
Floor	industrial polished concrete slab with the gutters, the slope of 1/140 of the length of the hall
Allowable Bearing Capacity of the Floor	800–1 500 kg/m² (capacity can be technologically increased, according to requirements of the exhibits)
Installation	connections of water, electric current, compressed air, telephone, internet
Lighting	20% natural light – ceiling skylights; artificial light – LED
Heating	hot air gas heating
Ventilation	yes

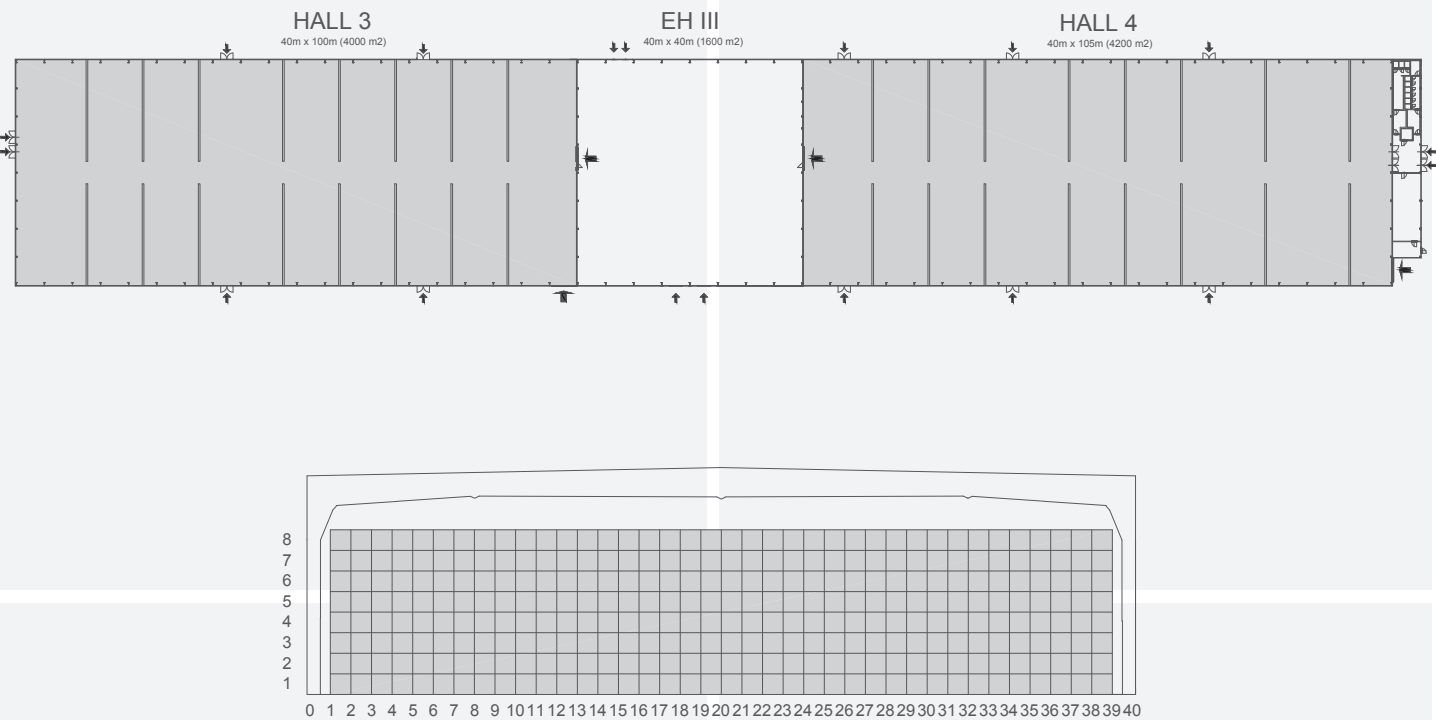
HALL 2 | HALL 2D | HALL 5



HALL 2 | HALL 2D | HALL 5

Gross Exhibition Area	Hall 2: 4 000 m² Hall 2D: 800 m² Hall 5: 5 000 m² (divided into sectors AB 40 m x 65 m and CD 40 m x 60 m)
Clearance Height of the Building	9 m across the entire width
Profiles of Entries	double leaf doors and rolling gate
Floor	industrial polished plastic-concrete slab with gutters, the slope of 1/140 of the length of the hall
Allowable Bearing Capacity of the Floor	800–1 500 kg/m² (capacity can be technologically increased, according to requirements of the exhibits)
Installation	connections of water, electric current, compressed air, telephone, internet
Lighting	Hall 2: 20% natural light – ceiling skylights; artificial light – LED
	Hall 2D: 35% natural light – ceiling skylights; artificial light – LED
	Hall 5: 20% natural light – ceiling skylights; artificial light – LED
Heating	hot air
Ventilation	yes

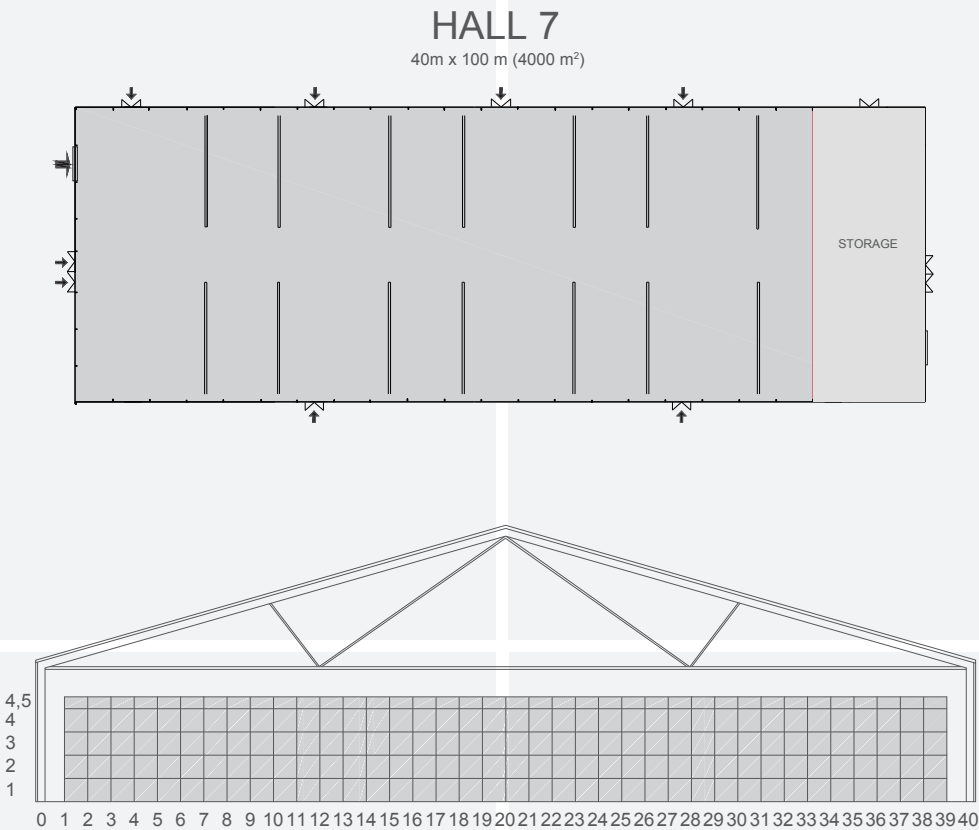
HALL 3 | HALL 4



HALL 3 | HALL 4

Gross Exhibition Area	4 000 m ² + 4 200 m ²
Clearance Height of the Building	9 m across the entire width
Profiles of Entries	double leaf doors and rolling gate
Floor	industrial with gently structural COMFLOOR surface, with gutters; the slope of 1/140 of the length of the hall
Allowable Bearing Capacity of the Floor	800–1 500 kg/m ² (capacity can be technologically increased, according to requirements of the exhibits)
Installation	connections of water, electric current, compressed air, telephone, internet
Lighting	20% natural light – ceiling skylights; artificial light – LED
Heating	hot air gas heating
Ventilation	yes

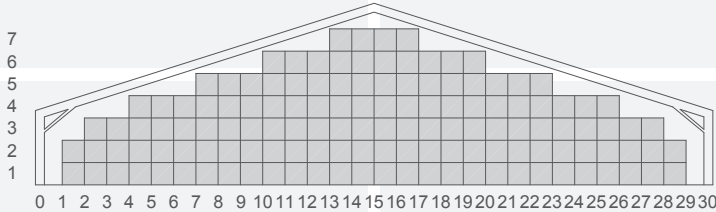
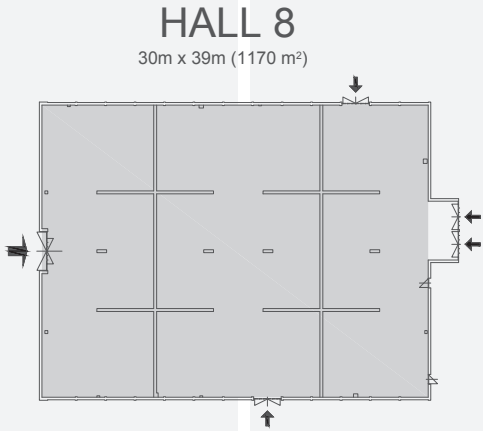
HALL 7



HALL 7

Gross Exhibition Area	4 000 m ²
Clearance Height of the Building	4,5 m
Profiles of Entries	double leaf doors and rolling gate 2x
Floor	industrial polished plastic-concrete slab with gutters
Allowable Bearing Capacity of the Floor	800–1 500 kg/m ² (capacity can be technologically increased, according to requirements of the exhibits)
Installation	connections of water, electric current, compressed air, telephone, internet
Lighting	25% natural light – ceiling skylights; artificial light – fluorescent lights
Heating	hot air
Ventilation	yes

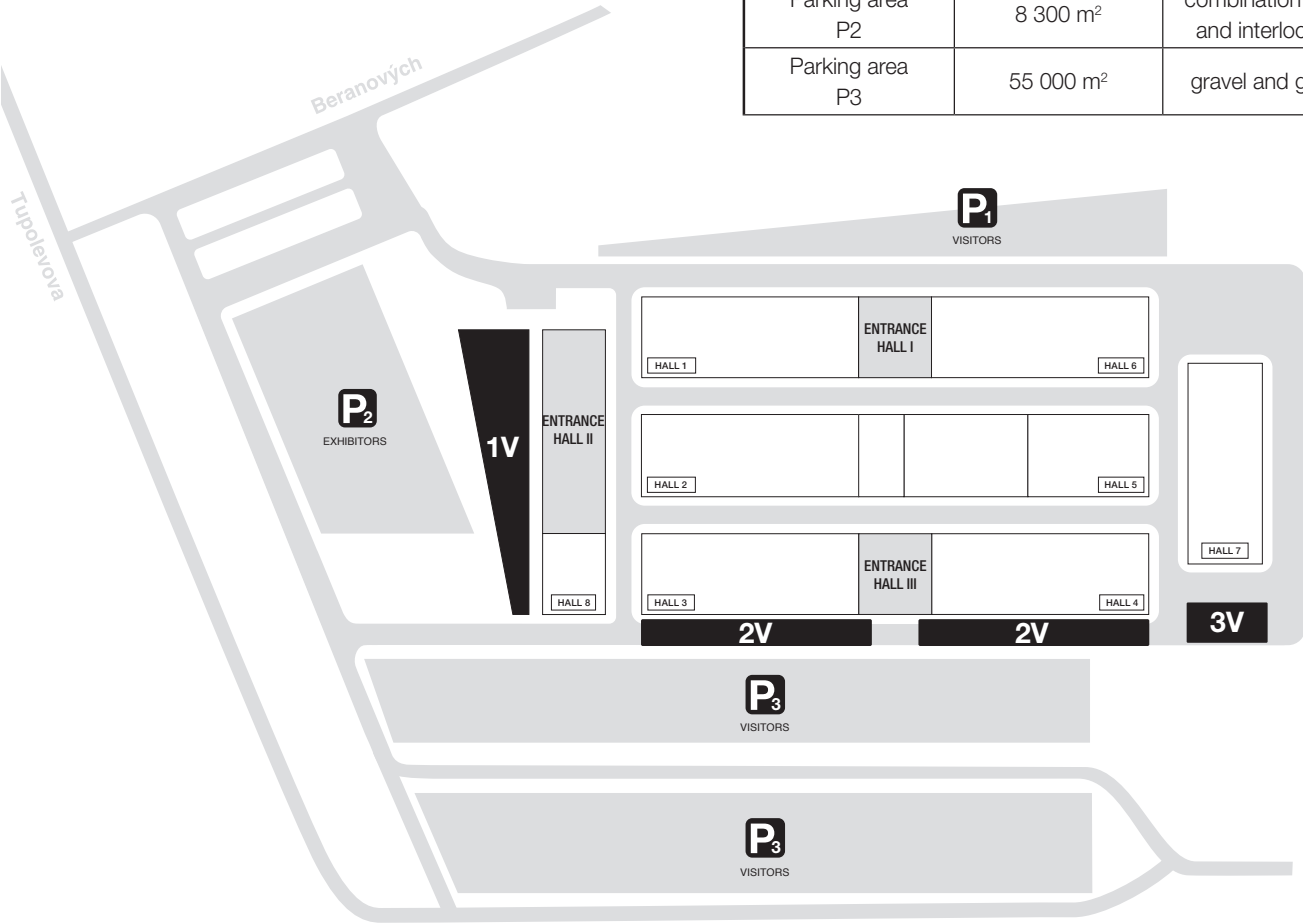
HALL 8



HALL 8	
Gross Exhibition Area	1 170 m²
Clearance Height of the Building	lateral 3.5 m, middle 7 m
Profiles of Entries	double leaf doors and rolling gate
Floor	industrial polished plastic-concrete slab with the gutters, the slope of 1/140 of the length of the hall
Allowable Bearing Capacity of the Floor	800–1 500 kg/m² (capacity can be technologically increased, according to requirements of the exhibits)
Installation	connections of water, electric current, compressed air, telephone, internet
Lighting	20% natural light – ceiling skylights; artificial light – fluorescent lights
Heating	hot air
Ventilation	yes

OUTDOOR AREA

OUTDOOR AREA		
	TOTAL GROSS AREA	THE AREA SURFACE
Outdoor area 1V	3 600 m²	interlocking tiles
Outdoor area 2V	1 330 m²	interlocking tiles
Outdoor area 3V	800 m²	combination of gravel and interlocking tiles
Parking area P1	3 000 m²	hardened surface
Parking area P2	8 300 m²	combination of asphalt and interlocking tiles
Parking area P3	55 000 m²	gravel and grass area



PVA EXPO PRAGUE
Beranových 667
199 00 Praha 9 – Letňany

info@pvaexpo.cz
www.pvaexpo.cz