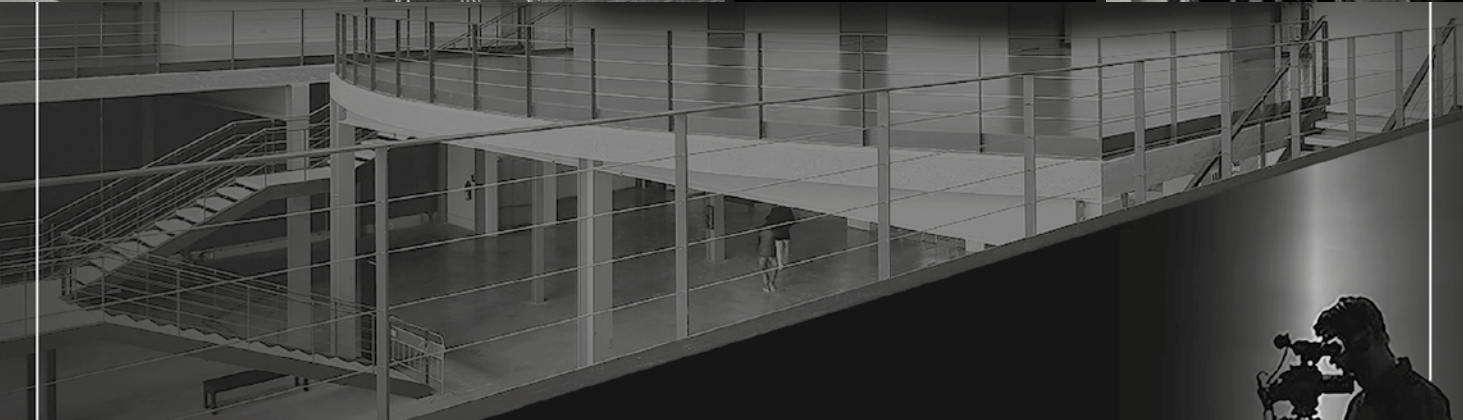


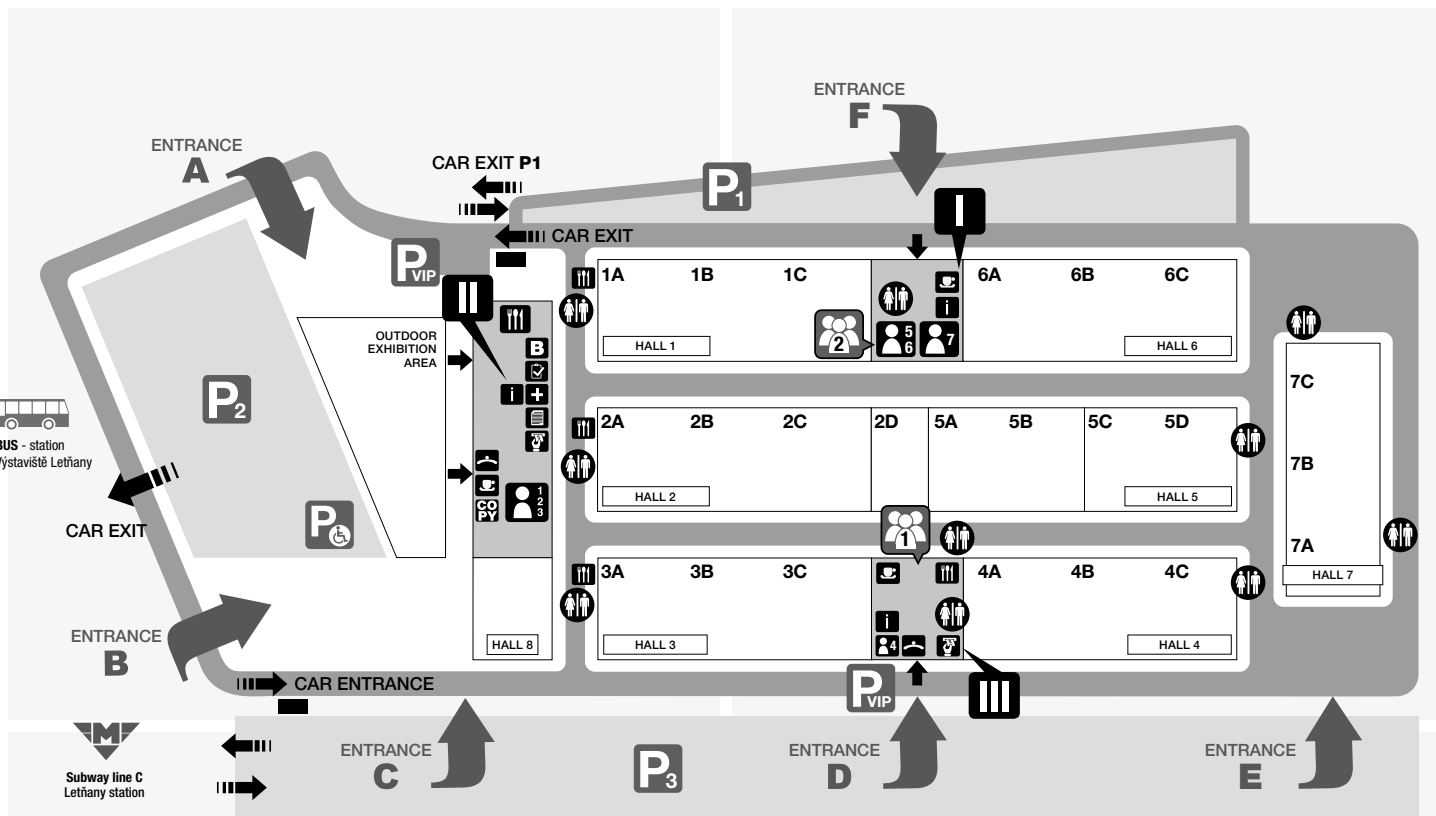
**PVA**  
EXPO PRAGUE

Place  
where you will get noticed

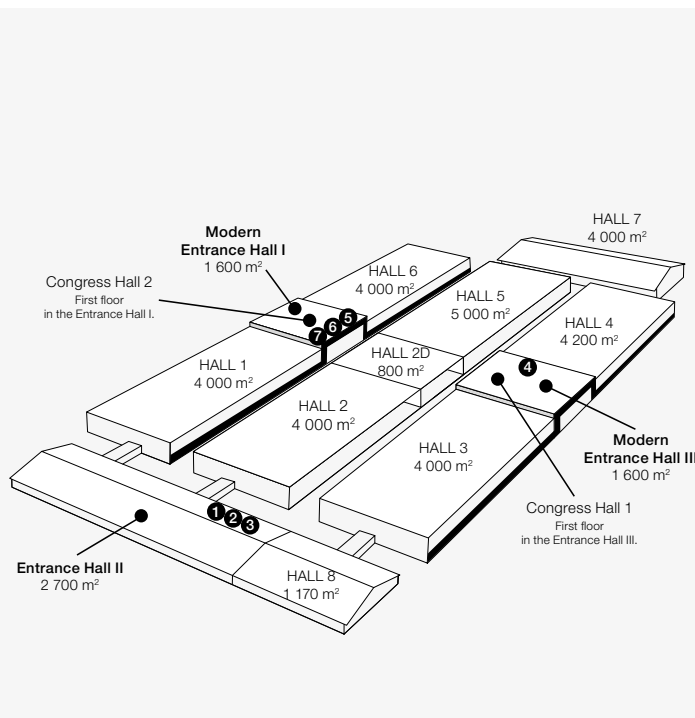


TECHNICAL  
specification





- Entrance Hall I
- Entrance Hall II
- Entrance Hall III
- Congress Hall (First floor in the Entrance Hall I and III)
- Conference rooms 1, 2, 3 (in the Entrance Hall II)
- Conference room 4 (in the Entrance Hall III)
- Conference rooms 5, 6 (in the Entrance Hall I)
- Conference room 7 (in the Entrance Hall I)
- Information
- Registration
- Parking Area
- Graphic and Exhibition Service CREATIV EXPO
- ATM Machine
- Cloakroom
- WC
- First Aid
- Press centre
- Business centre
- Café
- Restaurant



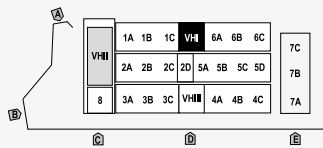
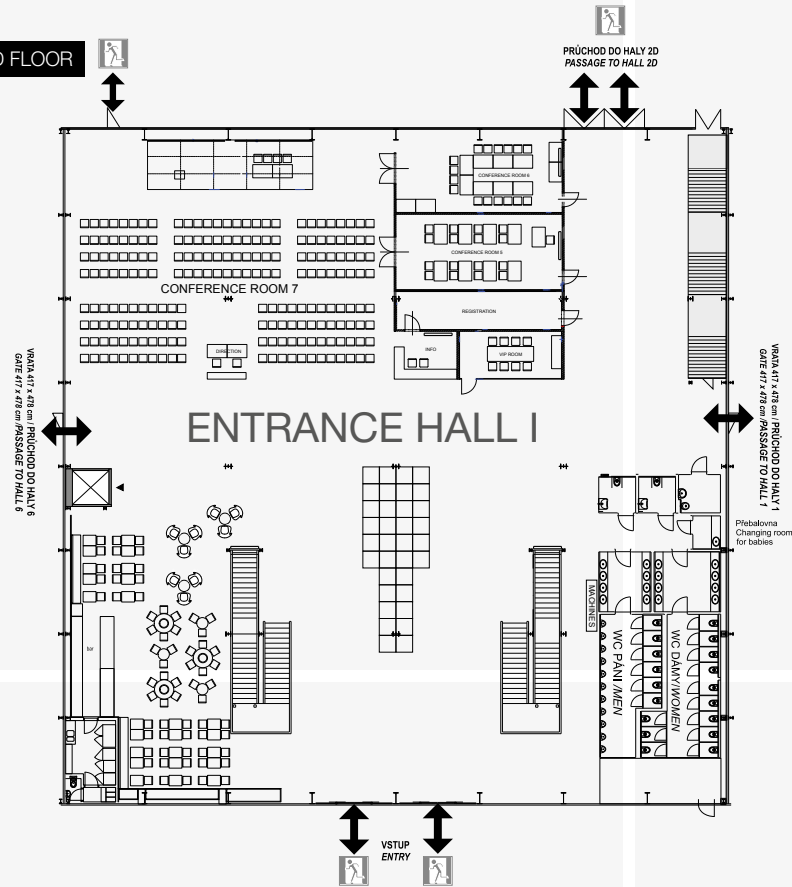
HALL CAPACITY				
		THEATRE	SCHOOL	BANQUET
Hall 1	4000 m <sup>2</sup>	3000	1800	1300
Hall 2	4000 m <sup>2</sup>	3000	1800	1300
Hall 2D	800 m <sup>2</sup>	600	360	270
Hall 3	4000 m <sup>2</sup>	3000	1800	1300
Hall 4	4200 m <sup>2</sup>	3100	1900	1400
Hall 5AB	2600 m <sup>2</sup>	1900	1200	850
Hall 5CD	2400 m <sup>2</sup>	1800	1100	800
Hall 6	4000 m <sup>2</sup>	3000	1800	1300
Hall 7	4000 m <sup>2</sup>	3000	1800	1300
Hall 8	1170 m <sup>2</sup>	850	530	390
Congress Hall 1 EHIII	600 m <sup>2</sup>	650	280	380
Congress Hall 2 EHI	600 m <sup>2</sup>	650	280	380
Foyer	480 m <sup>2</sup>			
Conference Room 1	208 m <sup>2</sup>	150	70	100
Conference Room 2, 3	48 m <sup>2</sup>	30	x	x
Conference Room 4	100 m <sup>2</sup>	60	x	x
Conference Room 5	28 m <sup>2</sup>	20	x	x
Conference Room 6	45 m <sup>2</sup>	30	x	x
Conference Room 7	300 m <sup>2</sup>	200	80	100

**DIMENSIONS OF HALLS in PVA EXPO PRAGUE**

Building	Gross area	Inner hall dimensions	Inner side height of the hall	Inner central height of the hall
Entrance Hall I	1600 m <sup>2</sup>	40 x 40 m	11 m	5 m (build-in floor level)
Entrance Hall II	2700 m <sup>2</sup>	30 x 90 m	3,5 m	7,5 m
Entrance Hall III	1600 m <sup>2</sup>	40 x 40 m	11 m	5 m (build-in floor level)
Hall 1	4000 m <sup>2</sup>	40 x 100 m	9 m	9 m
Hall 2	4000 m <sup>2</sup>	40 x 100 m	9 m	9 m
Hall 2D	800 m <sup>2</sup>	40 x 20 m	9 m	9 m
Hall 3	4000 m <sup>2</sup>	40 x 100 m	9 m	9 m
Hall 4	4200 m <sup>2</sup>	40 x 105 m	9 m	9 m
Hall 5	5000 m <sup>2</sup>	40 x 125 m	9 m	9 m
Hall 6	4000 m <sup>2</sup>	40 x 100 m	9 m	9 m
Hall 7	4000 m <sup>2</sup>	40 x 100 m	4,5 m	4,5 m
Hall 8	1170 m <sup>2</sup>	30 x 39 m	3,5 m	7,5 m

ENTRANCE HALL I

GROUND FLOOR



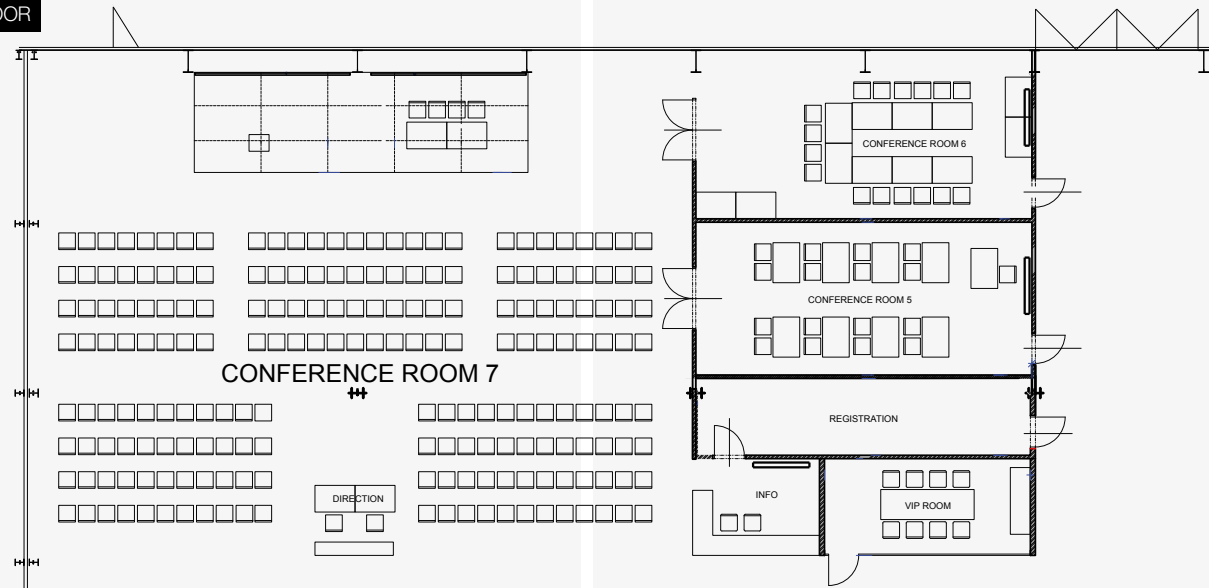
- Legenda:**
- 1 x 1 m (celkový rozměr haly 40 x 40 m)
  - ▭ digitální panely, obrázky
  - ➡ nouzový východ
- Caption:**
- 1 x 1 m (total hall dimension 40 x 40 m)
  - ▭ digital panels, screens
  - ➡ emergency exit

ENTRANCE HALL I

Gross Area	1 600 m <sup>2</sup>
Clearance Height	5 m
Technical Entry	From Hall 1
Entry for Personnel and Visitors	Double leaf doors
Floor	Industrial concrete slab
Allowable Bearing Capacity of the Floor	800–1 500 kg/m <sup>2</sup> (capacity can be technologically increased, according to requirements of the exhibits)
Installation upon request	connections of water, electric current, internet
Lighting	natural light (glass walls), artificial lights - LED
Heating	air-conditioning
Other Equipment	toilets
	fixed Installation of cafe
	digital advertising panels, information counter

ENTRANCE HALL I – CONFERENCE ROOMS

GROUND FLOOR



CONFERENCE ROOM 5

Total area	28 m <sup>2</sup> (2,8 x 10 m)
Surface area	carpet
Installation	electrical connection 230 V current, internet
Equipment	10 pcs tables, 10 pcs chairs
AV technology	65" 4K screen and sound system, 1 pc hand microphone, 1 pc headset

CONFERENCE ROOM 6

Total area	45 m <sup>2</sup> (4,5 x 10 m)
Surface area	carpet
Installation	electrical connection 230 V current
Equipment	10 pcs tables, 10 pcs chairs
AV technology	65" 4K screen and sound system 1 pc hand microphone, 1 pc headset

VIP ROOM

Total area	17,4 m <sup>2</sup> (2,9 x 6 m)
Surface area	carpet
Installation	electrical connection 230 V current, internet
Equipment	1 pc table, 8 pcs armchairs

CONFERENCE ROOM 7

Total area	300 m <sup>2</sup> (20 x 15 m)
Surface area	carpet
Installation	electrical connection current
Equipment	podium 3x 10 m, preview monitor, 2 pcs tables, 4 pcs chairs, max. 200 chairs incl. theater arrangement
AV technology	2 projectors 1920x1080, 5800 ANSI 2 screens 16:9, 400x225 cm preview monitor 43" sound system, 8x PS-P83T speaker 2 subwoofers PS-P83WT amplifier DSP 2-750 MKII 2 pcs hand microphones, 2 pcs headset laptop – win 11, Office 2021 staging equipment – SoundCraft Ui16 sound desk video BLACKMAGIC DESIGN ATEM MINI EXTREME stage lighting – 8 pcs TMH-H240 lights

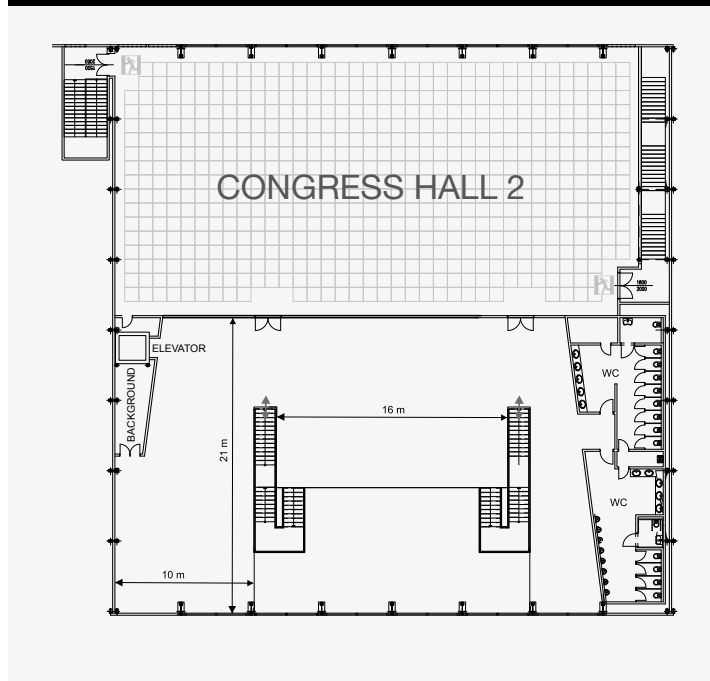
ENTRANCE HALL 1 – FOYER OF THE CONGRESS HALL 2



1ST FLOOR



CONGRESS HALL 2



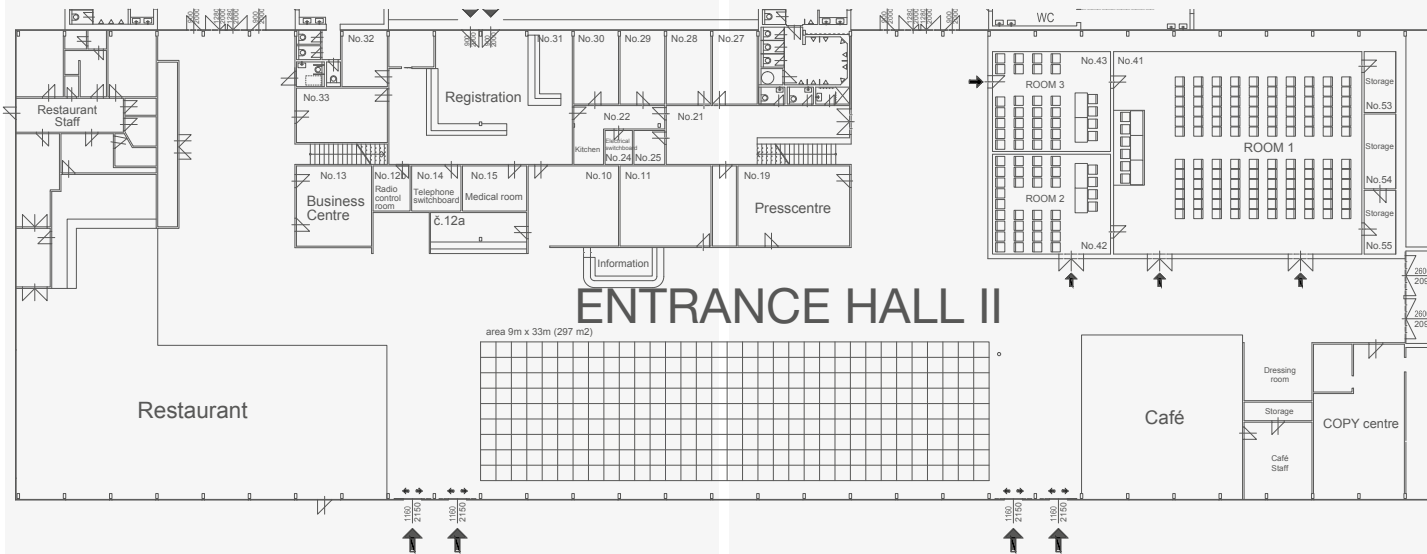
CONGRESS HALL 2



CONGRESS HALL 2

- Congress hall 600 m<sup>2</sup>, foyer 480 m<sup>2</sup>
- Congress hall with a capacity of up to 650 people, theater, school, banquet arrangement possibilities
- strategically located on the floor in the Entrance Hall I between Halls 1 and 6, possibility of further connection with exhibition halls
- a generous foyer suitable for banquet celebrations, accompanying program and partner presentation stands
- daylight with the possibility of shading
- air conditioning
- barrier-free access
- large-capacity toilets in the foyer

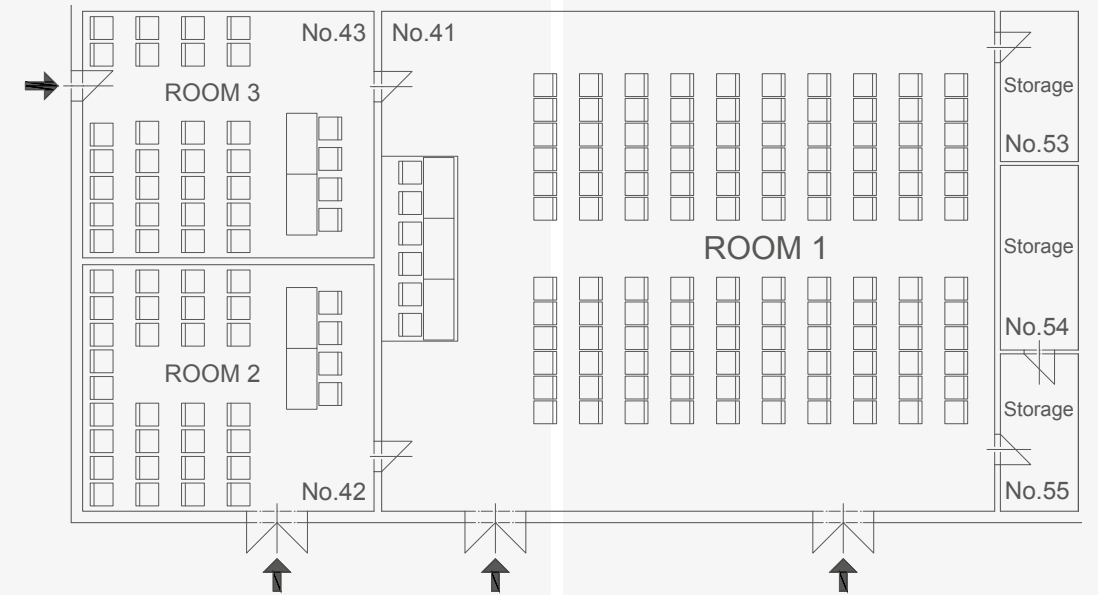
## ENTRANCE HALL II



## ENTRANCE HALL II

Gross Area	2 700 m <sup>2</sup>
Gross Exhibition area	300 m <sup>2</sup>
Clearance Height of the Building	lateral 3.5 m, middle 7.5 m
Technical Driveway	from the Hall 8
Personnel and Visitor Entrances	sliding and double leaf doors
Floor	interlocking tiles, ceramic tiles
Allowable Bearing Capacity of the Floor	800–1 500 kg/m <sup>2</sup> (capacity can be technologically increased, according to requirements of the exhibits)
Installation after Consultation	connections of water, electric current, compressed air, telephone, internet
Lighting	natural light (glass walls), artificial lights - LED
Heating	hot water
Ventilation of Halls	yes
Other Equipment	fixed installation of restaurant and snack bar conference center, press center, business center toilets, cloakroom registration with background - offices, Information counter floor built-in offices ATM digital advertising panels copy center radio switchboard the insurance company emergency room

## ENTRANCE HALL II – CONFERENCE ROOMS



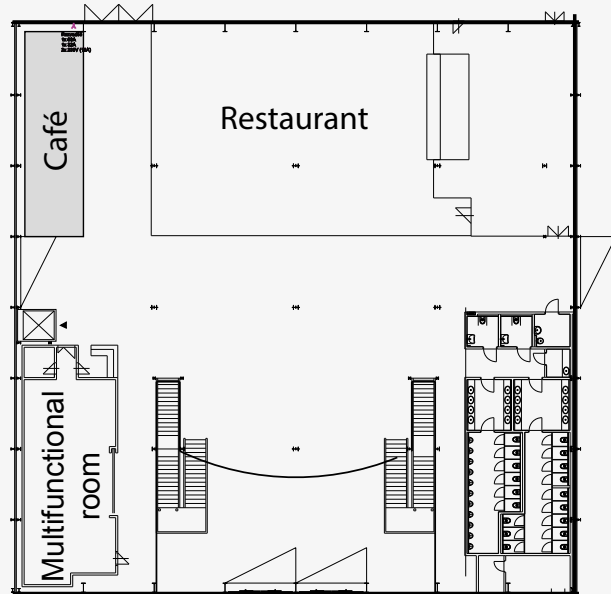
## CONFERENCE ROOM 1

Total Area	208 m <sup>2</sup> (16 x 13 m)
The Area Surface	carpet
Installation	connections of electricity
Equipment	podium, lecture stand, chairs
AV equipment	Projector Panasonic PT-VZ585, luminosity 5000 ANSI Framed canvas 3200 x 2000 mm (16:10) Audio mix SOUNDCRAFT Ui 16 2x hand wireless microphone SENNHEISER 2x wireless headset microphone SENNHEISER 2x speaker box 12" Apart MASK 12-BL Projection notebook DELL Vostro 15-P62F

## CONFERENCE ROOM 2, 3

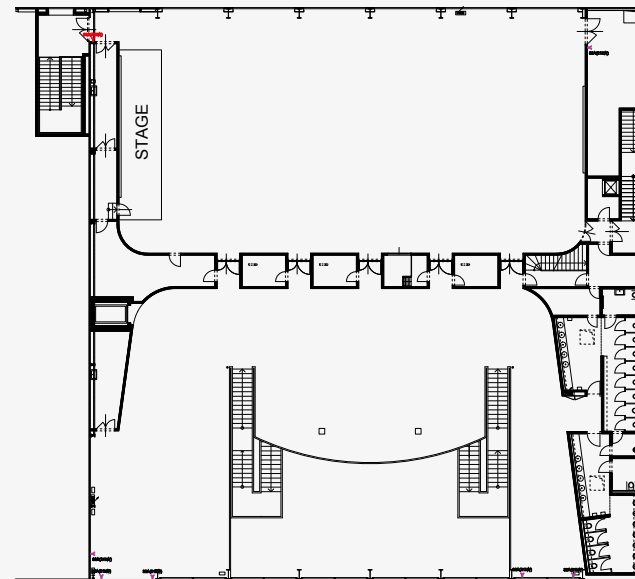
Total Area	48 m <sup>2</sup> (7,5 x 6,4 m)
The Area Surface	PVC
Installation	connections of electricity (230 V), internet
Equipment	tables, chairs

ENTRANCE HALL III



GROUND FLOOR

CONGRESS HALL 1



1ST FLOOR

ENTRANCE HALL III

Gross Exhibition area	1 600 m <sup>2</sup>
Clearance Height	5 m
Technical Entry	From Hall 3
Floor	industrial concrete slab
Allowable Bearing Capacity of the Floor	800–1 500 kg/m <sup>2</sup> (capacity can be technologically increased, according to requirements of the exhibits)
Installation	connections of water, electric current, internet
Lighting	natural light (glass walls), artificial light - LED
Heating	hot air, air-conditioning (Congress Hall)
Ventilation	Yes – Multifunctional room
Additional equipment	Fixed restaurant and coffee place
	Toilets, Cloakroom
	Information counter
	ATM
	digital advertising panels

CONGRESS HALL 1

- Congress hall 600 m<sup>2</sup>, foyer 480 m<sup>2</sup>
- Congress hall with a capacity of up to 650 people, theatre, school, banquet arrangement possibilities
- strategically located on the floor in Entrance Hall III between Halls 3 and 4, possibility of further connection with exhibition halls
- a generous foyer suitable for banquet celebrations, accompanying program and partner presentation stands
- modern audio visual technology with a control system AMX, widescreen HD projection
- the possibility of using the most modern mapping
- daylight with the possibility of shading
- air conditioning
- barrier-free access
- large walk-through background behind the stage, dressing room, storage boxes, lift (door width 90 cm)

AV TECHNOLOGY IN CONGRESS HALL \*)

PROJECTION TECHNOLOGY

- 16:9 projection (can be extended to 32:9)
- data projector 20,000 ANSILM, WUXGA, including lens
- data switch, remote control of the presentation
- presentation notebook
- screen 9 x 3.6 m, infrastructure cabling required

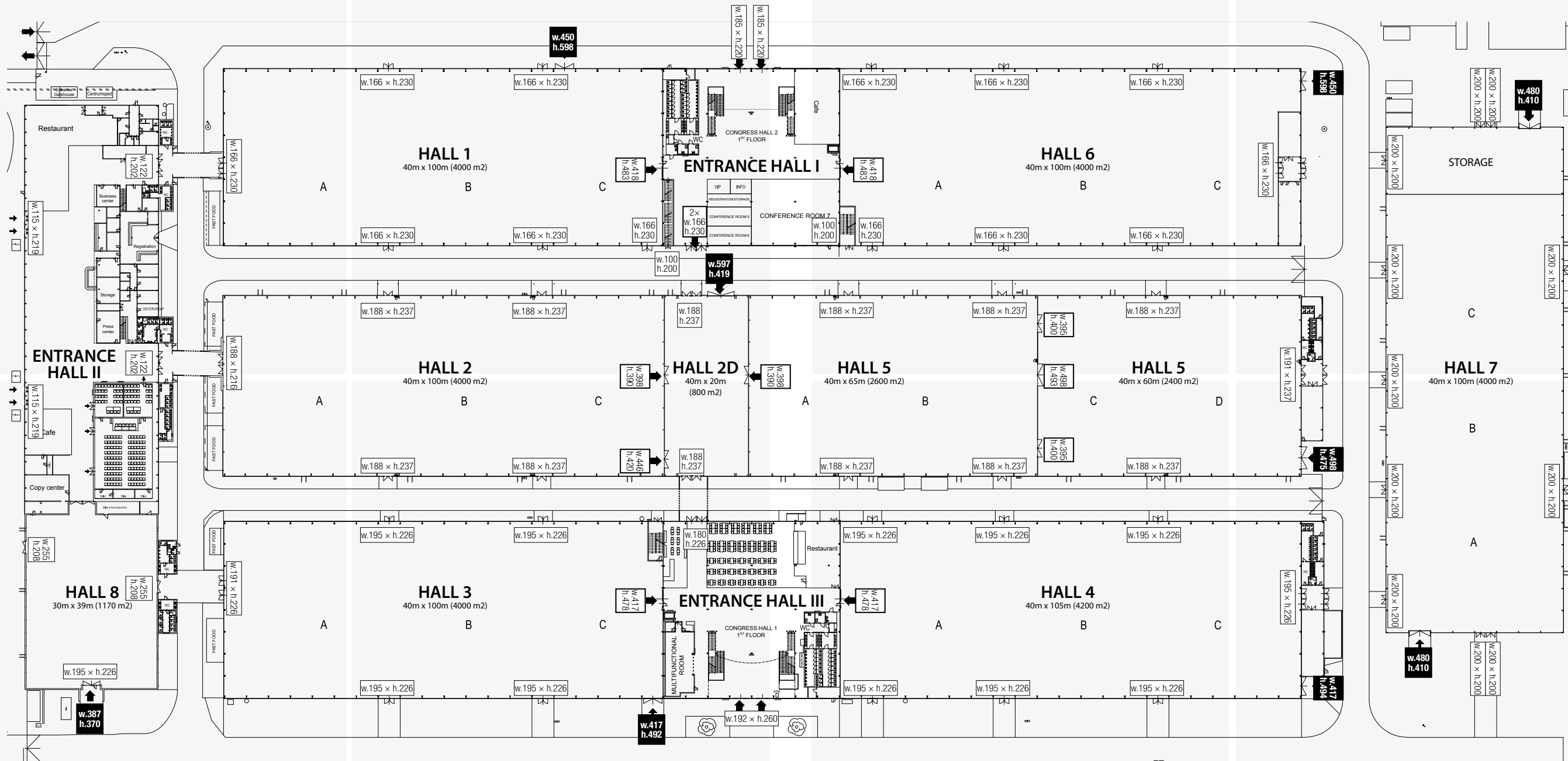
STAGE LIGHTING

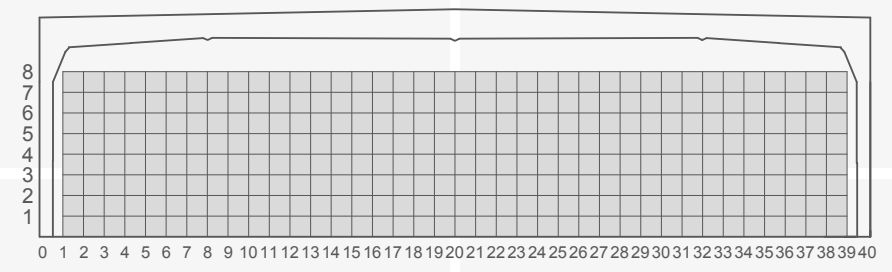
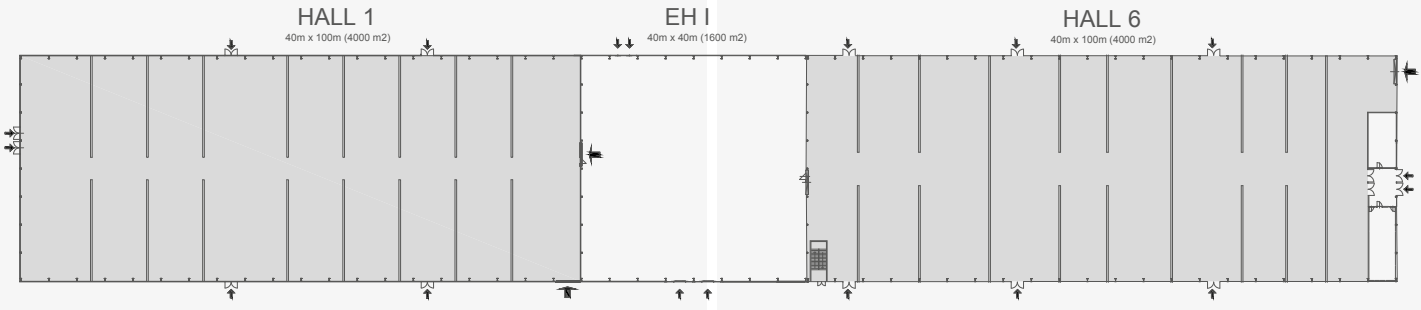
- fresnel reflector 1000 W – 6 pcs
- profile reflector 750 W – 4 pcs
- dimmer, control console

SOUND SYSTEM

- Line Array active speakers – podium – 6 pcs
- Line Array active speakers – Delay rear part – 4 pcs
- active Subwoofer „18“ - 4 pcs
- digital stage box, digital mixing desk
- wireless microphone set (2 pcs hands, 2 pcs headset)
- connecting a PC to the audio system
- necessary infrastructure cabling

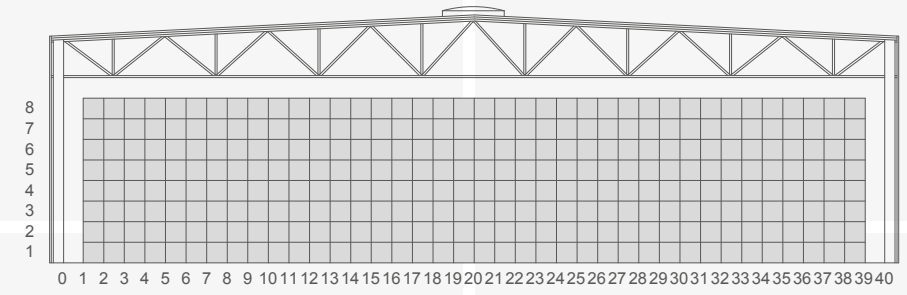
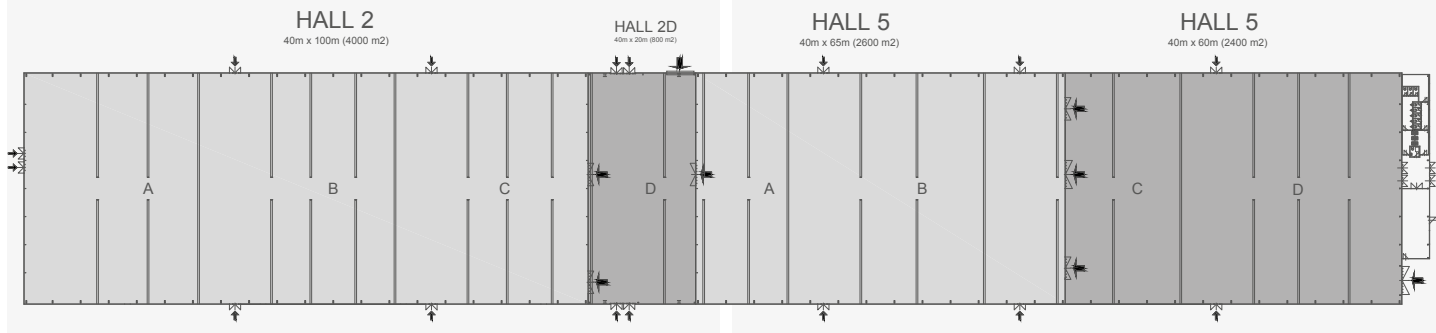
\*) basic equipment





**HALL 1 | HALL 6**

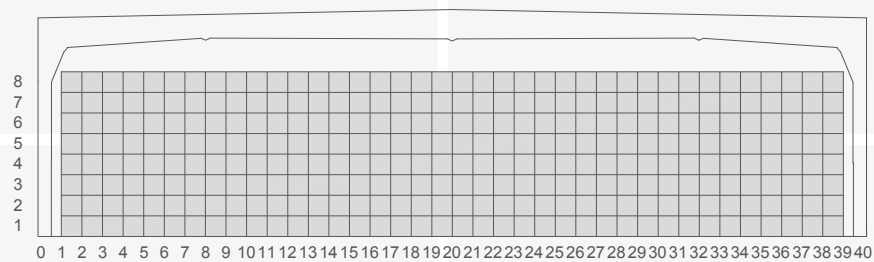
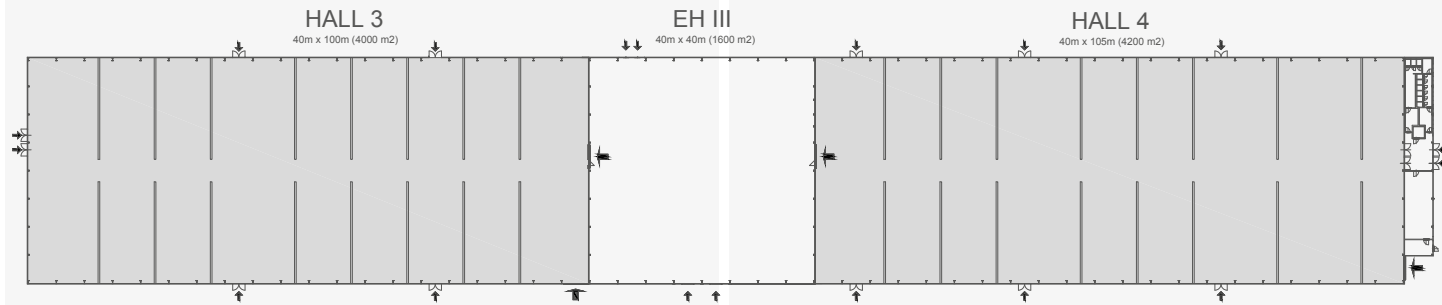
Gross Exhibition area	4 000 m <sup>2</sup>
Clearance Height of the Building	lateral 9 m, middle 9 m
Profiles of Entries	double leaf doors and rolling gate
Floor	industrial polished concrete slab with the gutters, the slope of 1/140 of the length of the hall
Allowable Bearing Capacity of the Floor	800–1 500 kg/m <sup>2</sup> (capacity can be technologically increased, according to requirements of the exhibits)
Installation	connections of water, electric current, compressed air, telephone, internet
Lighting	20% natural light – ceiling skylights; artificial light – LED
Heating	hot air gas heating
Ventilation	yes



**HALL 2 | HALL 2D | HALL 5**

Gross Exhibition Area	Hall 2: 4 000 m <sup>2</sup> Hall 2D: 800 m <sup>2</sup> Hall 5: 5 000 m <sup>2</sup> (divided into sectors AB 40 m x 65 m and CD 40 m x 60 m)
Clearance Height of the Building	9 m across the entire width
Profiles of Entries	double leaf doors and rolling gate
Floor	industrial polished plastic-concrete slab with gutters, the slope of 1/140 of the length of the hall
Allowable Bearing Capacity of the Floor	800–1 500 kg/m <sup>2</sup> (capacity can be technologically increased, according to requirements of the exhibits)
Installation	connections of water, electric current, compressed air, telephone, internet
Lighting	Hall 2: 20% natural light – ceiling skylights; artificial light – LED Hall 2D: 35% natural light – ceiling skylights; artificial light – LED Hall 5: 20% natural light – ceiling skylights; artificial light – LED
Heating	hot air gas heating
Ventilation	yes



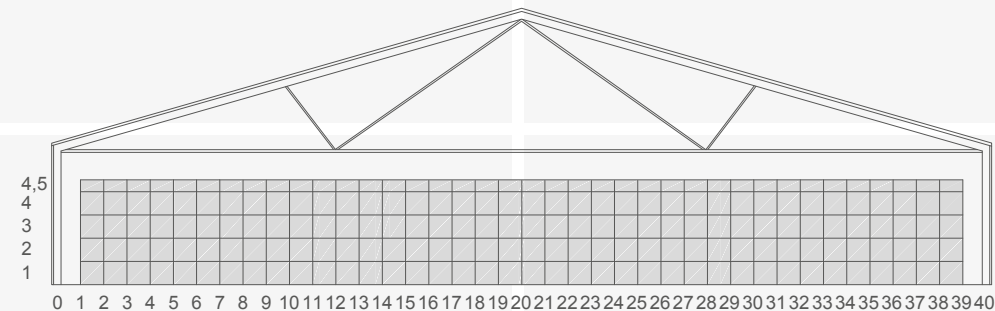
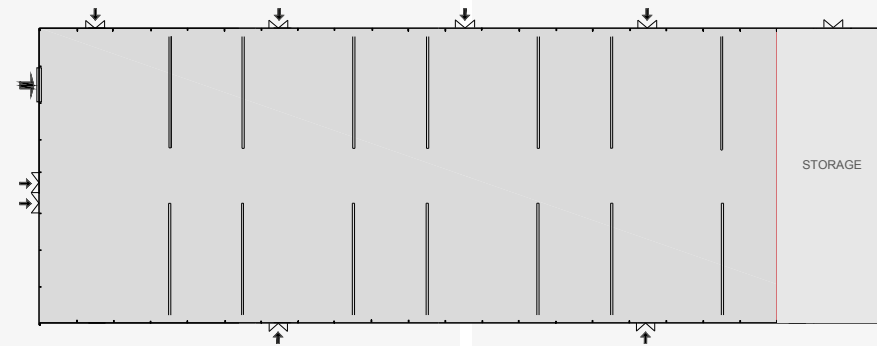


HALL 3 | HALL 4

Gross Exhibition Area	4 000 m <sup>2</sup> + 4 200 m <sup>2</sup>
Clearance Height of the Building	9 m across the entire width
Profiles of Entries	double leaf doors and rolling gate
Floor	industrial with gently structural COMFLOOR surface, with gutters; the slope of 1/140 of the length of the hall
Allowable Bearing Capacity of the Floor	800–1 500 kg/m <sup>2</sup> (capacity can be technologically increased, according to requirements of the exhibits)
Installation	connections of water, electric current, compressed air, telephone, internet
Lighting	20% natural light – ceiling skylights; artificial light – LED
Heating	hot air gas heating
Ventilation	yes

HALL 7

40m x 100 m (4000 m<sup>2</sup>)

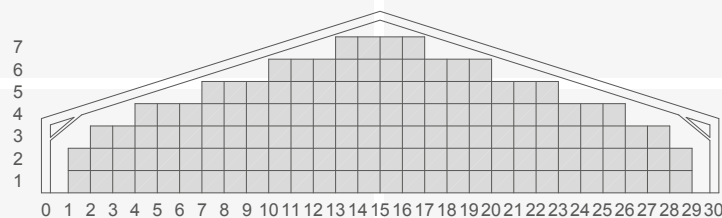
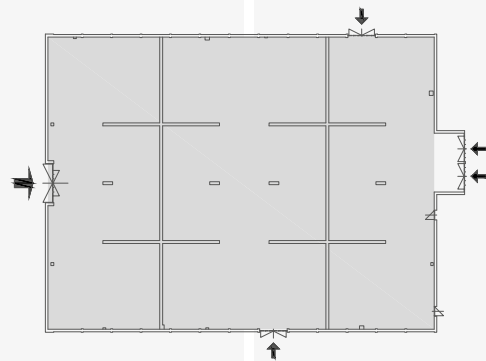


HALL 7

Gross Exhibition Area	4 000 m <sup>2</sup>
Clearance Height of the Building	4,5 m
Profiles of Entries	double leaf doors and rolling gate 2x
Floor	industrial polished plastic-concrete slab with gutters
Allowable Bearing Capacity of the Floor	800–1 500 kg/m <sup>2</sup> (capacity can be technologically increased, according to requirements of the exhibits)
Installation	connections of water, electric current, compressed air, telephone, internet
Lighting	25% natural light – ceiling skylights; artificial light – fluorescent lights
Heating	hot air
Ventilation	yes

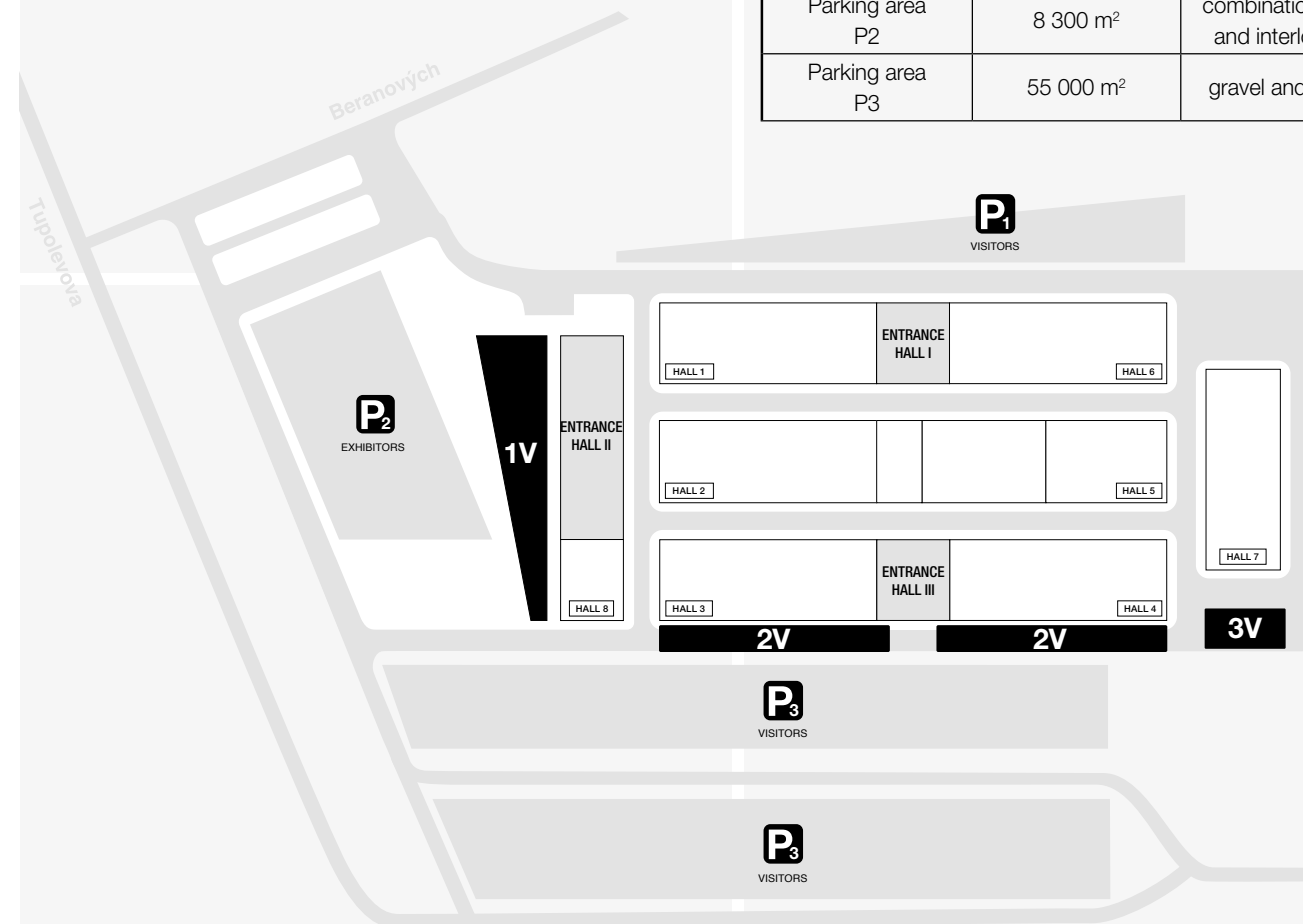
### HALL 8

30m x 39m (1170 m<sup>2</sup>)



HALL 8	
Gross Exhibition Area	1 170 m <sup>2</sup>
Clearance Height of the Building	lateral 3.5 m, middle 7 m
Profiles of Entries	double leaf doors and rolling gate
Floor	industrial polished plastic-concrete slab with the gutters, the slope of 1/140 of the length of the hall
Allowable Bearing Capacity of the Floor	800–1 500 kg/m <sup>2</sup> (capacity can be technologically increased, according to requirements of the exhibits)
Installation	connections of water, electric current, compressed air, telephone, internet
Lighting	20% natural light – ceiling skylights; artificial light – fluorescent lights
Heating	hot air
Ventilation	yes

OUTDOOR AREA		
	TOTAL GROSS AREA	THE AREA SURFACE
Outdoor area 1V	3 600 m <sup>2</sup>	interlocking tiles
Outdoor area 2V	1 330 m <sup>2</sup>	interlocking tiles
Outdoor area 3V	800 m <sup>2</sup>	combination of gravel and interlocking tiles
Parking area P1	3 000 m <sup>2</sup>	hardened surface
Parking area P2	8 300 m <sup>2</sup>	combination of asphalt and interlocking tiles
Parking area P3	55 000 m <sup>2</sup>	gravel and grass area



PVA EXPO PRAGUE  
Beranových 667  
199 00 Prague 9 – Letňany

[info@pvaexpo.cz](mailto:info@pvaexpo.cz)  
[www.pvaexpo.cz](http://www.pvaexpo.cz)

